



# SYLLABUS

**Session: 2025 – 2026**

**Class – V**

**“The purpose of  
education is to turn  
mirrors into  
windows.”**

# INDEX

Index are clickable,  
click on the subject to go directly to that page

<b>Subject</b>	<b>Page No</b>
<a href="#">English.....</a>	<a href="#">3</a>
<a href="#">Hindi.....</a>	<a href="#">15</a>
<a href="#">Maths.....</a>	<a href="#">28</a>
<a href="#">Science.....</a>	<a href="#">31</a>
<a href="#">Social Science.....</a>	<a href="#">37</a>
<a href="#">Computer.....</a>	<a href="#">42</a>
<a href="#">GK &amp; Reasoning.....</a>	<a href="#">44</a>
<a href="#">Art .....</a>	<a href="#">54</a>
<a href="#">Health and Phy. Edu.....</a>	<a href="#">57</a>
<a href="#">Annexure-1 (Summer Vacation Homework) .....</a>	<a href="#">58</a>
<a href="#">Annexure-2 (Winter Vacation Homework) .....</a>	<a href="#">60</a>

## **SUBJECT– ENGLISH**

### **Prescribed Books:-**

- 1- The English Cruise-5 (S.Chand Publications)**
- 2- Step-up English Grammar and Composition-5 (Goyal Brothers Prakashan)**
- 3- Cursive Writing-5 (Modak Publications)**
- 4- A Better You- Part A: Life Skills and Value Education-5 (Provided by the school, available on school website [www.ashamodernschool.in](http://www.ashamodernschool.in))**

### **TERM - 1 COURSE FOR PERIODIC TEST- 1**

#### **LITERATURE**

##### **The English Cruise-5**

1. Peter Pan and His Shadow
3. Haroo, the Croc

#### **GRAMMAR**

##### **Step-up English Grammar and Composition-5**

1. Using a Dictionary
2. The Sentence
3. Subject and Predicate
4. Nouns
5. Nouns: Singular and Plural
6. Nouns: Gender
7. Possessives and Contractions

##### **Cursive Writing-5**

Page no. 3 to 21

##### **LIFE SKILLS AND VALUE EDUCATION-5**

Unit 1- Sharing

Unit 2- Honesty

**Note:** To be assessed in Half Yearly Examination only.

## **CREATIVE WRITING SKILL**

### **Formal Letter Writing (60-80 words)**

1. Letter to the editor of a local newspaper highlighting the need of public park in your locality as the children are found playing on the roads.
2. Letter to the editor highlighting the disturbance caused by loudspeakers and the problems faced by the residents of the locality.
3. Letter to the editor of your local newspaper complaining about the frequent power cuts in your city.
4. Letter to the editor highlighting the issue of reckless driving.
5. Letter to the editor of your local newspaper highlighting the need to improve the condition of roads.

## **UNSEEN COMPREHENSIONS**

### **COURSE FOR HALF YEARLY EXAMS**

#### **LITERATURE**

##### **The English Cruise-5**

2. The Ice Golawala (POEM)
4. Candles in Space
5. My Brother Built a Robot (POEM)
6. Feasts for the Rats

##### **+ All the chapters from Periodic Test-1**

1. Peter Pan and His Shadow
3. Haroo, the Croc

#### **GRAMMAR**

##### **Step-up English Grammar and Composition-5**

8. Pronouns
9. Articles
10. Adjectives
11. Degrees of Comparison
12. Verbs
13. The Tense

14. Simple Present Tense
15. Present Continuous Tense
16. Present Perfect Tense

**+ All the chapters from Periodic Test-1**

1. Using a Dictionary
2. The Sentence
3. Subject and Predicate
4. Nouns
5. Nouns: Singular and Plural
6. Nouns: Gender
7. Possessives and Contractions

**Cursive Writing-5**

Page no. 22 to 41

**LIFE SKILLS AND VALUE EDUCATION -5**

- Unit 3- Cleanliness and Orderliness  
Unit 4- Forgiveness

**+All the units from Periodic Test-1**

- Unit 1- Sharing  
Unit 2- Honesty

**Note:** To be assessed in Half Yearly Examination only.

**CREATIVE WRITING SKILLS**

**a) Diary Entry (60-80 words)**

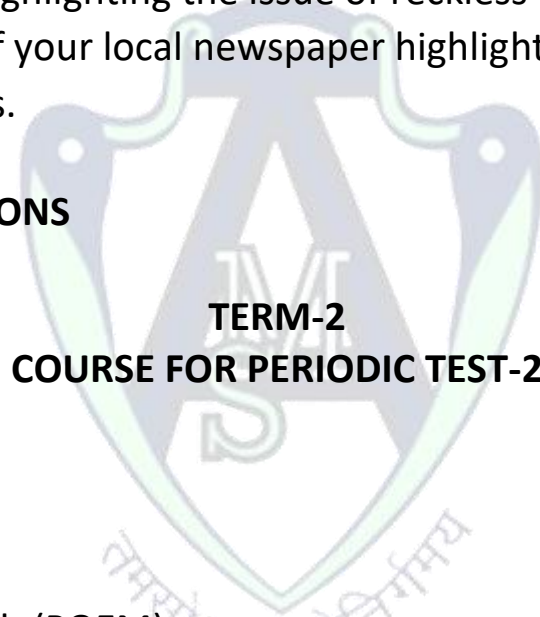
1. You have lost a watch which your grandfather had given you. You are very sad. Record your feelings in the form of a diary entry.
2. Write a diary entry recording the celebration of your birthday party.
3. Today was Sports Day at your school. Write a diary entry about your experience on this day.
4. Your parents have gone out of town for a week and left you with your grandparents. Write your experience about your stay with them.
5. While cycling, you fell on the roadside and hurt yourself. You had to be taken

- to a doctor. Write about your feelings and experience in a diary.
6. Write a diary entry describing the Annual Function of your school.

**b) Formal Letter Writing (60-80 words) from Periodic Test-1**

1. Letter to the editor of a local newspaper highlighting the need of public park in your locality as the children are found playing on the roads.
2. Letter to the editor highlighting the disturbance caused by loudspeakers and the problems faced by the residents of the locality.
3. Letter to the editor of your local newspaper complaining about the frequent power cuts in your city.
4. Letter to the editor highlighting the issue of reckless driving.
5. Letter to the editor of your local newspaper highlighting the need to improve the condition of roads.

**UNSEEN COMPREHENSIONS**



**TERM-2  
COURSE FOR PERIODIC TEST-2**

**LITERATURE**

**The English Cruise-5**

7. Think to Win
8. Let's Talk Rubbish (POEM)
9. The Poor Scribe and The Moneylender
10. A Brush with Mithila Art

**GRAMMAR**

**Step-up English Grammar and Composition-5**

17. Simple Past Tense
18. Past Continuous Tense
19. Simple Future Tense
20. 'Be Going to' Form
21. Future Continuous Tense

22. Modals
23. Subject- Verb Agreement
24. Negative Sentences
25. Interrogative Sentences

### **Cursive Writing-5**

Page no. 42 to 61

### **LIFE SKILLS AND VALUE EDUCATION-5**

Unit 5- Social Media

Unit 6- Body Shaming

**Note:** To be assessed in Annual Examination only.

### **CREATIVE WRITING SKILLS**

#### **a) Story Writing (60-80 words)**

1. The Foolish Donkey
2. Two Friends and the Bear
3. Androcles and the Lion
4. Robert Bruce and the Spider
5. The Mongoose and the Child
6. The Boy who cried Wolf

#### **b) Informal Letter Writing (60-80 words)**

1. Letter to a friend describing the Annual Prize Distribution Function of your school.
2. Letter to your younger brother who has grown very weak. Suggest ways how he can improve his health.
3. Letter inviting your friend to accompany you on a trip to Jim Corbett National Park.
4. Letter to your sister who is a bookworm, advising her to take part in sports and games.
5. Letter to your friend describing how you celebrated your last birthday.

### **UNSEEN COMPREHENSIONS**

## COURSE FOR ANNUAL EXAMS

### LITERATURE

#### The English Cruise-5

11. Dad and the Cat and the Tree (POEM)
12. A Crumb for the Bird

#### + All the chapters from Periodic Test-2

7. Think to Win
8. Let's Talk Rubbish (POEM)
9. The Poor Scribe and The Moneylender
10. A Brush with Mithila Art

### GRAMMAR

#### Step- up English Grammar and Composition-5

26. Active and Passive Voice
27. Adverbs
28. Prepositions
29. Conjunctions
30. Direct and Indirect Speech
31. Punctuation and the Use of Capital Letters
32. Vocabulary

#### + the chapters from Term-1 mentioned below

3. Subject and Predicate
4. Nouns
5. Nouns- Singular and Plural

#### + All the chapters from Periodic Test-2

17. Simple Past Tense
18. Past Continuous Tense
19. Simple Future Tense
20. 'Be Going to' Form
21. Future Continuous Tense
22. Modals
23. Subject- Verb Agreement
24. Negative Sentence



## 25. Interrogative Sentences

### **Cursive Writing-5**

Page no. 62 to 80

### **LIFE SKILLS AND VALUE EDUCATION-5**

Unit 7- Failure is a part of Life

Unit 8- Anger Management

### **+All the Units from Periodic Test-2**

Unit 5- Social Media

Unit 6- Body Shaming

**Note:** To be assessed in Annual Examination only.

### **CREATIVE WRITING SKILLS**

#### **a) Story Writing (60-80 words) from Periodic Test-2**

1. The Foolish Donkey
2. Two Friends and the Bear
3. Androcles and the Lion
4. Robert Bruce and the Spider
5. The Mongoose and the Child
6. The Boy who cried Wolf

#### **b) Diary Entry (60-80 words) from Half Yearly**

1. You have lost a watch which your grandfather had given you. You are very sad. Record your feelings in the form of a diary entry.
2. Write a diary entry recording the celebration of your birthday party.
3. Today was Sports day at your school. Write a diary entry about your experience on this day.
4. Your parents have gone out of town for a week and left you with your grandparents. Write your experience about your stay with them.
5. While cycling, you fell on the roadside and hurt yourself. You had to be taken to a doctor. Write about your feelings and experience in a diary.

6. Write a diary entry describing the Annual Function of your school.

**c) Formal Letter Writing (60-80 words) from Half Yearly**

1. Letter to the editor of a local newspaper highlighting the need of public park in your locality as the children are found playing on the roads.
2. Letter to the editor highlighting the disturbance caused by loudspeakers and the problems faced by the residents of the locality.
3. Letter to the editor of your local newspaper complaining about the frequent power cuts in your city.
4. Letter to the editor highlighting the issue of reckless driving.
5. Letter to the editor of your local newspaper highlighting the need to improve the condition of roads.

**UNSEEN COMPREHENSIONS**

**DELETED PORTION IN GRAMMAR:**

26. Active and Passive Voice (Exercise-B and D)
30. Direct and Indirect Speech (Exercise-D, E and F)

**QUESTION PAPER PATTERN FOR  
PERIODIC TEST-I AND PERIODIC TEST-II**

Time: 1½ hrs

M.M: 40

**Section-A (READING)**

One unseen comprehension passage will be given (160-180 words)

To answer the questions based on the given passage in the form of:

	No. of Ques.		Marks		
• Question-Answers	3	x	2	=	6
• True/False	2	x	1	=	2
• Complete the sentence	1	x	1	=	1
• Synonym/Antonym	1	x	1	=	1

**Total 10**

### Section-B (CREATIVE WRITING SKILL)

One writing skill will be given.  $1 \times 6 = 6$   
**Total 6**

### Section-C (GRAMMAR)

Seven questions, with two subparts each, from the Grammar syllabus will be given.  $7 \times 2 = 14$   
**Total 14**

### Section-D (LITERATURE)

1. To answer the questions based on the given extract from the lessons/poems  $2 \times 1 = 2$
  2. To answer the questions in about 20 to 30 words (2 out of 3)  $2 \times 2 = 4$
  3. Word Meanings (2 out of 3)  $2 \times \frac{1}{2} = 1$
  4. Make Sentences  $2 \times 1 = 2$
  5. Work with Words  $2 \times \frac{1}{2} = 1$
- Total 10**

## QUESTION PAPER PATTERN FOR HALF YEARLY EXAMS AND ANNUAL EXAMS

Time: 3hrs

MM: 80

### Section – A (READING)

Two unseen comprehensions will be given.

#### 1. Unseen Comprehension (180 to 200 words)

To answer the questions based on the given passage in the form of:

	No. of Ques.		Marks		
• Question-Answers	3	x	2	=	6
• True/False	2	x	1	=	2
• Complete the sentence	1	x	1	=	1
• Synonym/Antonym	1	x	1	=	1

**Total 10**

## 2. Unseen Comprehension (140 to 160 words)

To answer the questions based on the given **CASE** based passage in the form of:

• Multiple Choice Questions (MCQs)	4	x	1	=	4
• Fill in the blank	1	x	1	=	1
• Synonym /Antonym	1	x	1	=	1
			<b>Total</b>		<b>6</b>

## Section-B (CREATIVE WRITING SKILL)

### Half Yearly Examination

• To attempt any one out of the two diary entries	1	x	6	=	6
• To attempt any one out of the two formal letters	1	x	6	=	6
• To answer 'Expressing Opinion' based question on the given real-life situation with reference to Life Skills and Value Education (50-60 words)	1	x	4	=	4
			<b>Total</b>		<b>16</b>

### Annual Examination

• To write a story on the given title	1	x	6	=	6
• To attempt any one writing technique out of the following: Diary Entry <b>OR</b> Formal Letter	1	x	6	=	6
• To answer 'Expressing Opinion' based question on the given real-life situation with reference to Life Skills and Value	1	x	4	=	4

Education (50-60 words)

**Total 16**

**Section-C (GRAMMAR)**

Twelve questions, with two subparts each, from the Grammar syllabus will be given.

12 x 2 = 24  
**Total 24**

**Section-D (LITERATURE)**

1. To answer the questions based on the two extracts given from the lessons and poems

6 x 1 = 6

2. To answer the questions in about 20 to 30 words (4 out of 5)

4 x 2 = 8

3. Word meanings (6 out of 7)

6 x  $\frac{1}{2}$  = 3

4. Work with Words

6 x  $\frac{1}{2}$  = 3

**5. Half Yearly Examination**

To describe your favourite character from any story from The English Cruise in about 80-100 words

1 x 4 = 4

**Annual Examination**

To summarize a story from The English Cruise in about 80-100 words

1 x 4 = 4

**Total 24**

**NOTE:**

1. Same sentences from the prescribed grammar book will not be given in the examination.
2. Any extract from the chapters of The English Cruise will be given in the form of Seen Comprehension.
3. 50% of the words for Make Sentences will be from the notebook and 50% will be self-made.

## SUBJECT ENRICHMENT

### TERM-1 (20 marks)

- Word Dictation (10 words) 5 marks
- Paragraph Dictation-1 (35 to 40 words) 5 marks
- Paragraph Dictation-2 (35 to 40 words) 5 marks
- Reading & Cursive Writing 3+2=5 marks

### TERM-2 (20 marks)

- Word Dictation (10 words) 5 marks
- Paragraph Dictation-1 (35 to 40 words) 5 marks
- Paragraph Dictation-2 (35 to 40 words) 5 marks
- Reading & Cursive Writing 3+2=5 marks

### NOTE:

1. Word Dictation and Paragraph Dictation-1 will be given from the lessons of The English Cruise.
2. Paragraph Dictation-2 will be given from sources other than The English Cruise.
3. Dictation will be taken once a week in the class for practice.
4. In each term, during last week of every month, Word Dictation, Paragraph Dictation-1 and Paragraph Dictation-2 of 5 marks each will be taken.
5. The average marks of the best two dictations will be included in the Subject Enrichment of each term.

**विषय - हिन्दी**

**पुस्तकें -**

- नवीन सुबोध भारती - भाग-5 - संस्कृति प्रकाशन
- शैली हिन्दी व्याकरण - भाग-5 - फाइव फिंगर्स एजुकेशन प्रा.लि.
- हिंदी लेखन विधा - 5 - सलोनी गुप्ता

**Term-1**

**अर्धवार्षिक पूर्व परीक्षा (Periodic Test – 1)**

**खण्ड - क अपठित बोध**

गद्यांश पर आधारित प्रश्न

**खण्ड - ख व्याकरण अनुभाग**

1. वर्ण विचार
2. लिंग परिवर्तन (केवल शब्द)
3. वचन परिवर्तन (केवल शब्द)
4. विराम चिह्न (पूर्णविराम, अल्पविराम, प्रश्नवाचक, विस्मयादिबोधक)

**खण्ड - ग पाठ्य पुस्तक - नवीन सुबोध भारती**

पाठ-1 गंध गुणों की बिखराएँ! (कविता)

पाठ-2 फूलों का नगर

**खण्ड - घ रचनात्मक लेखन**

औपचारिक पत्र लेखन - अवकाश हेतु प्रधानाचार्य को प्रार्थना पत्र

- हिंदी लेखन विधा पृष्ठ संख्या - 2 से 15

## अर्धवार्षिक परीक्षा (Half Yearly Examination)

### खण्ड - क अपठित बोध

गद्यांश पर आधारित प्रश्न

### खण्ड - ख व्याकरण अनुभाग

1. क्रिया (परिभाषा, भेद - अकर्मक, सकर्मक क्रिया, छाँटना तथा भरना)
2. पर्यायवाची शब्द
3. अनेकार्थी शब्द

+ अर्धवार्षिक पूर्व परीक्षा के व्याकरण अनुभाग के निम्नलिखित उपविषय भी अर्धवार्षिक परीक्षा में सम्मिलित किए गए हैं -

4. वर्ण विचार
5. लिंग परिवर्तन (केवल शब्द)
6. वचन परिवर्तन (केवल शब्द)
7. विराम चिह्न (पूर्णविराम, अल्पविराम, प्रश्नवाचक, विस्मयादिबोधक)

### खण्ड - ग पाठ्य पुस्तक - नवीन सुबोध भारती

पाठ-3 समय पर विजय

पाठ-4 भारत गाथा (कविता)

पाठ-5 गुलाब सिंह

पाठ-6 नेक मेहमान

+ अर्धवार्षिक पूर्व परीक्षा के निम्नलिखित पाठ भी अर्धवार्षिक परीक्षा में सम्मिलित किए गए हैं -

पाठ-1 गंध गुणों की बिखराएँ! (कविता)

पाठ-2 फूलों का नगर



## खण्ड - घ रचनात्मक लेखन

1. औपचारिक पत्र लेखन - प्रधानाचार्य को अवकाश हेतु प्रार्थना पत्र
  2. अनुच्छेद लेखन (विकल्प सहित)  
(विद्यार्थियों के बौद्धिक स्तर के अनुसार किसी भी सामान्य विषय पर)
- हिंदी लेखन विधा पृष्ठ संख्या - 16 से 27

## Term-2

### वार्षिक पूर्व परीक्षा (Periodic Test-2)

## खण्ड - क अपठित बोध

गद्यांश पर आधारित प्रश्न

## खण्ड - ख व्याकरण अनुभाग

- 1- अनेक शब्दों के लिए एक शब्द
- 2- विलोम शब्द
- 3- विशेषण (परिभाषा एवं भेद, विशेषण छाँटना तथा भरना)
- 4- मुहावरे (केवल अर्थ)

## खण्ड - ग पाठ्य पुस्तक - नवीन सुबोध भारती

पाठ-7 निजभाषा उन्नति

पाठ-8 कैसे-कैसे नाम!

पाठ-9 कबीर वाणी (दोहे)

पाठ- 10 हमारा शरीर - एक मशीन

## खण्ड - घ रचनात्मक लेखन

- लघुकथा लेखन - अधूरी कहानी पूरी करो
- हिंदी लेखन विधा पृष्ठ संख्या - 28 से 40

## वार्षिक परीक्षा (Annual Examination)

### खण्ड - क अपठित बोध

गद्यांश पर आधारित प्रश्न

### खण्ड - ख व्याकरण अनुभाग

1. काल
2. क्रिया विशेषण (परिभाषा एवं भेद, क्रिया विशेषण छाँटना)  
+ अर्धवार्षिक पूर्व परीक्षा, अर्धवार्षिक परीक्षा तथा वार्षिक पूर्व परीक्षा के व्याकरण अनुभाग के निम्नलिखित उपविषय भी वार्षिक परीक्षा में सम्मिलित किए गए हैं -
3. वर्ण विचार
4. लिंग परिवर्तन (केवल शब्द)
5. वचन परिवर्तन (केवल शब्द)
6. विराम-चिह्न (पूर्णविराम, अल्पविराम, प्रश्नवाचक, विस्मयादिबोधक)
7. क्रिया (परिभाषा एवं भेद, क्रिया छाँटना तथा भरना)
8. पर्यायवाची शब्द
9. अनेकार्थी शब्द
10. अनेक शब्दों के लिए एक शब्द
11. विलोम शब्द
12. विशेषण (परिभाषा एवं भेद, विशेषण छाँटना तथा भरना)

### 13. मुहावरे (केवल अर्थ)

#### खण्ड - ग पाठ्य पुस्तक - नवीन सुबोध भारती

पाठ-11 बुद्धिमान बालक

पाठ-12 नन्हा-मुन्ना राही हूँ (कविता)

+ वार्षिक पूर्व परीक्षा के निम्नलिखित पाठ भी वार्षिक परीक्षा में सम्मिलित किए गए हैं -

पाठ-7 निजभाषा उन्नति

पाठ-8 कैसे-कैसे नाम!

पाठ-9 कबीर वाणी (दोहे)

पाठ- 10 हमारा शरीर-एक मशीन

#### खण्ड - घ रचनात्मक लेखन

1. लघुकथा लेखन - अधूरी कहानी पूरी करो

2. पत्र लेखन-

- औपचारिक पत्र-प्रधानाचार्य को अवकाश हेतु प्रार्थना पत्र
- अनौपचारिक पत्र- पिताजी से रुपए मँगवाने हेतु पत्र

3. अनुच्छेद लेखन (विकल्प सहित)

(विद्यार्थियों के बौद्धिक स्तर के अनुसार किसी सामान्य विषय पर)

- हिंदी लेखन विधा पृष्ठ संख्या - 41 से 48

प्रश्नपत्रों का प्रारूप एवं अंक विभाजन  
(Blue Print of the Question Papers)

अर्धवार्षिक पूर्व परीक्षा के प्रश्नपत्र का प्रारूप एवं अंक विभाजन

सेट - ए/ बी

समय- 1 घंटा 30 मिनट

पूर्णांक- 40

सामान्य निर्देश :

- प्रस्तुत प्रश्न पत्र चार खण्डों में विभाजित है -
- खण्ड- क अपठित बोध 5 अंक
- खण्ड- ख व्याकरण अनुभाग 15 अंक
- खण्ड- ग पाठ्य पुस्तक- नवीन सुबोध भारती 15 अंक
- खण्ड- घ रचनात्मक लेखन 5 अंक

क्र० सं०	उपविषय	अंक	कुल भार
	खण्ड - क अपठित बोध	प्र० x अंक	5 अंक
1	गद्यांश पर आधारित प्रश्न बहुविकल्पीय प्रश्न • एक प्रश्न ज्ञान आधारित • एक प्रश्न समझ आधारित • एक प्रश्न विश्लेषणात्मक (एकाधिक सही उत्तर वाला प्रश्न) वर्णनात्मक प्रश्न • एक प्रश्न आलोचनात्मक/संश्लेषणात्मक	3×1=3  1×2=2	
	खण्ड - ख व्याकरण अनुभाग		15 अंक
2	वर्ण विचार	3×1=3	
3	लिंग	4×1=4	

4	वचन	4×1=4	
5	विराम चिह्न	4×1=4	
	<b>खण्ड -ग पाठ्य पुस्तक- नवीन सुबोध भारती</b>		<b>15 अंक</b>
6	गद्यांश पर आधारित प्रश्न <b>बहुविकल्पीय प्रश्न</b> • दो प्रश्न समझ आधारित • एक प्रश्न तर्क आधारित (कथन और कारण संबंधी)	3×1=3	
7	दो शब्दार्थ एवं प्रयोग (विकल्प सहित)	2×2=4	
8	गद्य एवं पद्य पाठों से दो प्रश्न (विकल्प सहित) (15 से 25 शब्दों में)	2×2=4	
9	रिक्त स्थान पूर्ति (दिए गए शब्दों से)	4×1=4	
	<b>खण्ड - घ रचनात्मक लेखन</b>		<b>5 अंक</b>
10	औपचारिक पत्र लेखन- प्रधानाचार्य को अवकाश हेतु प्रार्थना पत्र (शब्द सीमा लगभग 50 शब्द)	1×5=5	

वार्षिक पूर्व परीक्षा के प्रश्नपत्र का प्रारूप एवं अंक विभाजन

समय- 1 घंटा 30 मिनट

पूर्णांक- 40

सामान्य निर्देश : पूर्ववत

क्र० सं०	उपविषय	अंक	कुल भार
	<b>खण्ड - क अपठित बोध</b>	<b>प्र० x अंक</b>	<b>5 अंक</b>
1	गद्यांश पर आधारित प्रश्न	3×1= 3	

	<b>बहुविकल्पीय प्रश्न</b> <ul style="list-style-type: none"> <li>• एक प्रश्न ज्ञान आधारित</li> <li>• एक प्रश्न समझ आधारित</li> <li>• एक प्रश्न विश्लेषणात्मक (एकाधिक सही उत्तर वाला प्रश्न)</li> </ul> <b>वर्णनात्मक प्रश्न</b> <ul style="list-style-type: none"> <li>• एक प्रश्न आलोचनात्मक/संश्लेषणात्मक</li> </ul>	1×2=2	
	<b>खण्ड - ख व्याकरण अनुभाग</b>		<b>15 अंक</b>
2	विशेषण की परिभाषा	1×2= 2	
	विशेषण छाँटकर भेद बताना एवं भरना	2×1= 2	
3	अनेक शब्दों के लिए एक शब्द	4×1=4	
4	विलोम शब्द	3×1=3	
5	मुहावरे (केवल शब्द)	4×1=4	
	<b>खण्ड-ग पाठ्य पुस्तक- नवीन सुबोध भारती</b>		<b>15 अंक</b>
	<b>नोट:-</b> पाठ्य पुस्तक- नवीन सुबोध भारती(प्रश्न संख्या 6 से 9) के प्रश्न पत्र का प्रारूप एवं अंक विभाजन अर्धवार्षिक पूर्व परीक्षा की भाँति रहेगा।		
	<b>खण्ड - घ रचनात्मक लेखन</b>		<b>5 अंक</b>
10	लघुकथा लेखन - अधूरी कहानी पूरी करना (लगभग 50 शब्दों में)	1×5=5	

**अर्धवार्षिक परीक्षा के प्रश्नपत्र का प्रारूप एवं अंक विभाजन**

**सेट - ए/ बी**

**समय- 3 घंटे**

**पूर्णांक- 80**

**सामान्य निर्देश :**

- प्रस्तुत प्रश्न पत्र चार खण्डों में विभाजित है -
- खण्ड- क अपठित बोध 10 अंक
- खण्ड- ख व्याकरण अनुभाग 32 अंक
- खण्ड- ग पाठ्य पुस्तक- नवीन सुबोध भारती 28 अंक
- खण्ड- घ रचनात्मक लेखन 10 अंक

क्र० सं०	उपविषय	अंक	कुल भार
	<b>खण्ड - क अपठित बोध</b>	<b>प्र० x अंक</b>	<b>10 अंक</b>
1	दो गद्यांशों पर आधारित प्रश्न बहुविकल्पीय प्रश्न • एक प्रश्न ज्ञान आधारित • एक प्रश्न समझ आधारित • एक प्रश्न विश्लेषणात्मक (एकाधिक सही उत्तर वाला प्रश्न) वर्णनात्मक प्रश्न • एक प्रश्न आलोचनात्मक/संश्लेषणात्मक	3×1=3      1×2=2	5×2
	<b>खण्ड - ख व्याकरण अनुभाग</b>		<b>32 अंक</b>
2	वर्ण-विचार	4×1=4	
3	लिंग	5×1=5	
4	वचन	5×1=5	
5	पर्यायवाची (प्रतिशब्द दो पर्यायवाची)	4×1=4	
6	अनेकार्थी शब्द	4×1=4	
7	क्रिया की परिभाषा	1×2=2	

	क्रिया छाँटकर भेद बताना	4×1=4	
8	विराम चिह्न	4×1=4	
	<b>खण्ड-ग पाठ्य पुस्तक- नवीन सुबोध भारती</b>		<b>28 अंक</b>
9	गद्यांश पर आधारित प्रश्न <b>बहुविकल्पीय प्रश्न</b> • पाँच प्रश्न समझ आधारित	5×1=5	
10	पद्यांश पर आधारित प्रश्न • चार प्रश्न समझ आधारित • एक प्रश्न केंद्रीय भाव आधारित	5×1=5	
11	दो शब्दार्थ एवं उनके वाक्य (विकल्प सहित)	2×2=4	
12	गद्य एवं पद्य पाठों से संबंधित तीन प्रश्न (विकल्प सहित) (15 से 25 शब्दों में)	3×2=6	
13	रिक्त स्थान पूर्ति (दिए गए शब्दों से)	4×1=4	
14	योग्यता/दक्षता संबंधी प्रश्न(विकल्प सहित) (35 से 40 शब्दों में)	1×4=4	
	<b>(खण्ड - घ) रचनात्मक लेखन</b>		<b>10 अंक</b>
15	औपचारिक पत्र लेखन - (प्रधानाचार्य को अवकाश हेतु प्रार्थना पत्र) (शब्द सीमा लगभग 50 शब्द)	1×5=5	
16	अनुच्छेद लेखन (विकल्प सहित) (शब्द सीमा लगभग 50 शब्द)	1×5=5	



वार्षिक परीक्षा के प्रश्नपत्र का प्रारूप एवं अंक विभाजन

समय- 3 घंटे

पूर्णांक -80

सामान्य निर्देश : पूर्ववत

क्र० सं०	उपविषय	अंक	कुल भार
	<b>खण्ड - क अपठित बोध</b>	<b>प्र० x अंक</b>	<b>10 अंक</b>
1	दो गद्यांशों पर आधारित प्रश्न <b>बहुविकल्पीय प्रश्न</b> • एक प्रश्न ज्ञान आधारित • एक प्रश्न समझ आधारित • एक प्रश्न विश्लेषणात्मक (एकाधिक सही उत्तर वाला प्रश्न) <b>वर्णनात्मक प्रश्न</b> • एक प्रश्न आलोचनात्मक/संश्लेषणात्मक	3×1=3     1×2=2	5×2
	<b>खण्ड - ख व्याकरण अनुभाग</b>		<b>32 अंक</b>
2	वर्ण विचार संबंधी प्रश्न	3×2=6	
3	• विशेषण की परिभाषा/ क्रिया विशेषण की परिभाषा/ क्रिया की परिभाषा • विशेषण छाँटकर भेद बताना/ क्रिया विशेषण छाँटकर भेद बताना/ क्रिया छाँटकर भेद बताना	1×2= 2  4×1= 4	
4	लिंग / वचन	4×1=4	
5	पर्यायवाची (प्रतिशब्द दो पर्यायवाची/ विलोम शब्द)	4×1=4	
6	अनेकार्थी शब्द/ अनेक शब्दों के लिए एक शब्द	4×1=4	
7	मुहावरे/ विराम चिह्न	4×1=4	

8	काल	4×1=4	
	<b>खण्ड - ग पाठ्य पुस्तक - नवीन सुबोध भारती</b>		<b>28 अंक</b>
	<b>नोट:-</b> पाठ्य पुस्तक-वितान (प्रश्न संख्या 9 से 14) के प्रश्न पत्र का प्रारूप एवं अंक विभाजन अर्धवार्षिक परीक्षा की भाँति रहेगा।		
	<b>खण्ड - घ रचनात्मक लेखन</b>		<b>10 अंक</b>
15	<ul style="list-style-type: none"> <li>• औपचारिक पत्र-प्रधानाचार्य को अवकाश हेतु प्रार्थना पत्र (शब्द सीमा लगभग 50 शब्द)</li> </ul> <p style="text-align: center;">अथवा</p> <ul style="list-style-type: none"> <li>• अनौपचारिक पत्र- पिताजी से रुपए मँगवाने हेतु पत्र (शब्द सीमा लगभग 50 शब्द)</li> </ul>	1x5= 5	
16	<p>अनुच्छेद लेखन - (विकल्प सहित)</p> <p>शब्द सीमा लगभग 50 शब्द</p> <p style="text-align: center;">अथवा</p> <p>लघुकथा लेखन - अधूरी कहानी पूरी करना (शब्द सीमा लगभग 50 शब्द)</p>	1x5= 5	

**निर्देश :-**

1. कविता में से वाक्य प्रयोग के लिए शब्द नहीं दिए जाएँगे ।
2. खाली स्थान पाठों के मध्य से भी (स्वनिर्मित) पूछे जा सकते हैं।

## विषय संवर्धन गतिविधि (Subject Enrichment Activity)

अर्धवार्षिक परीक्षा (Term-1)/ वार्षिक परीक्षा (Term-2)

पूर्णांक-20

### (1) श्रुतलेख

• कठिन शब्द - 10 शब्द - 5 अंक

• एक अनुच्छेद - 35-40 शब्द - 5 अंक

(पाठ्यपुस्तक से)

• एक अनुच्छेद 35-40 शब्द - 5 अंक

(अन्य पुस्तक से)

(2) वाचन एवं सुलेख  $3+2 = 5$  अंक

(पाठ्यपुस्तक से अथवा अन्य पुस्तक से)

### नोट:-

- प्रति सप्ताह तीन श्रुतलेख अनिवार्य हैं। प्रत्येक माह के अंत में एक श्रुतलेख परीक्षा अपेक्षित है। इस प्रकार अर्धवार्षिक एवं वार्षिक परीक्षा से पूर्व कक्षा में कुल तीन श्रुतलेख परीक्षाएँ (प्रति परीक्षा- 10 कठिन शब्द एवं दो अनुच्छेद) अपेक्षित हैं। उक्त परीक्षाओं में से किन्हीं दो परीक्षाओं के, जिनमें विद्यार्थी ने सर्वाधिक अंक प्राप्त किए हों, उनके अंक विषय संवर्धन गतिविधि में सम्मिलित किए जाएँगे।
- नोटबुक का कार्य एवं रख-रखाव और हिन्दी लेखन विधा पुस्तक आंतरिक मूल्यांकन का अंश होगी।

## **SUBJECT – MATHEMATICS**

**Prescribed Book :** MATHS SKILL 5

G.RAM BOOKS (P.)LTD

**By :** Dr.Ram Mohan

Er. Yatish Chaturvedi

### **TERM-I**

#### **COURSE FOR PERIODIC TEST-1**

Chapter – 1 Large numbers

Chapter - 2 Roman Numerals

Chapter - 3 The Four Fundamental Operations

· Tables : 2 to 15

#### **COURSE FOR HALF YEARLY EXAMS**

Chapter 4 Factors and Multiples

Chapter - 5 Fractions

Chapter - 6 Decimals

Chapter - 7 Estimation

· Tables : 2 to 16

**+ All the chapters of PT- I mentioned below**

Chapter - 1 Large Numbers

Chapter - 2 Roman Numerals

Chapter - 3 The Four Fundamental Operations

### **TERM-II**

#### **COURSE FOR PERIODIC TEST - II**

Chapter - 8 Percentage, Profit and Loss

Chapter - 9 Measurement

Chapter –10 Time and Temperature

Chapter - 11 Money

Chapter – 15 Pattern , Net and Symmetry

· Tables: 2 to 18

### **COURSE FOR ANNUAL EXAMS**

Chapter - 12 Geometry

Chapter – 13 Perimeter, Area and Volume

Chapter – 14 Data Handling

**Chapter - 3 The Four Fundamental Operations (From Term-I)**

· Tables : 2 to 20

**+ All the chapters of PT-II mentioned below**

Chapter - 8 Percentage, Profit and Loss

Chapter - 9 Measurement

Chapter –10 Time and Temperature

Chapter - 11 Money

Chapter – 15 Pattern , Net and Symmetry

### **QUESTION PAPER PATTERN FOR PERIODIC TEST-I AND PERIODIC TEST-II**

Time : 1 hour 30 minutes

M.M.- 40

**Question paper consists of four sections :**

Section A -2 questions of 1 mark each

$$2 \times 1 = 02$$

Section B -3 questions of 2 marks each

$$3 \times 2 = 06$$

Section C - 4 questions of 3 marks each

$$4 \times 3 = 12$$

Section D - 5 questions of 4 marks each

$$5 \times 4 = 20$$

**Total 40**

## QUESTION PAPER PATTERN FOR HALF YEARLY AND ANNUAL EXAMS

Time : 3 hours

M.M.-80

### Question paper consists of four sections :

Section A – 8 questions of 1 mark each  $8 \times 1 = 08$

Section B – 5 questions of 2 marks each  $5 \times 2 = 10$

Section C – 10 questions of 3 marks each  $10 \times 3 = 30$

Section D – 8 questions of 4 marks each  $8 \times 4 = 32$

**Total 80**

### Deleted Portion :

- **Assessment Time , Word Stock , Challenge and Activity** are deleted.
- Mathematics Practice Worksheets and Assessment 1,2,3 and 4 are for self practice and will not be asked in the exams.

### NOTE :

1. The digits of questions can be changed in the question paper.
2. Examples can also be asked in the question paper.
3. At least 35% weightage will be given to word problems in the question paper.

## SUBJECT ENRICHMENT

### TERM – I

- **Work ( refer to Annexure -1)**

### TERM- II

- **Project Work ( refer to Annexure -2)**

**NOTE :** Other details of activities will be provided to the students in their Classes.

## **SUBJECT: SCIENCE**

**Prescribed Book:** Science Success 5

**By:** Neelima Jain

**Publication:** Goyal Brothers Prakashan

### **TERM-I COURSE FOR PERIODIC TEST-I**

Chapter 1- Growing Plants

Chapter 2- Animals: Habitat and Adaptations

Chapter 3- Human Skeletal System

**Diagrams:-**

a) Life cycle of a plant

b) Structure of seed (Monocot and Dicot)

c) Kinds of muscles (Voluntary, Involuntary and Cardiac)

### **COURSE FOR HALF YEARLY EXAMS**

Chapter 4- Human Nervous System

Chapter 5- Food and Health

Chapter 6- Safety and First aid

Chapter 7- Soil

Chapter 8- Rocks and Minerals

**+Chapters of PT-I mentioned below:**

Chapter 1- Growing Plants

Chapter 2- Animals: Habitat and Adaptations

Chapter 3- Human Skeletal System

**Diagrams:**

a) Human brain

b) Internal structure of human eye

c) Traffic signs (any five)

d) Soil profile

**+Diagrams of PT-I mentioned below:**

- e) Life cycle of a plant
- f) Structure of seed (Monocot and Dicot)
- g) Kinds of muscles (Voluntary, Involuntary and Cardiac)

**TERM – II**  
**COURSE FOR PERIODIC TEST-II**

- Chapter 9- Solids, Liquids and Gases
- Chapter 10- Force, Energy and Simple Machines
- Chapter 11- Air and Water
- Chapter 12- Natural Disasters

**Diagrams:**

- a) Molecular arrangement in solids, liquids and gases.
- b) Three types of levers with one example of each.
- c) Distillation
- d) Active volcano

**COURSE FOR ANNUAL EXAMS**

- Chapter 13- The Earth, the Sun and the Moon
- Chapter 14- Our Environment
- Chapter 5- Food and Health **(Included from Term – I)**

**+Chapters of PT-II mentioned below:**

- Chapter 9- Solids, Liquids and Gases
- Chapter 10- Force, Energy and Simple Machines
- Chapter 11- Air and Water
- Chapter 12- Natural Disasters

**Diagrams:**

- a) Internal structure of the earth.
- b) Lunar eclipse
- c) Solar eclipse

**+Diagrams of PT-II mentioned below:**



- d) Molecular arrangement in solids, liquids and gases
- e) Three types of levers with one example of each.
- f) Distillation
- g) Active volcano

### QUESTION PAPER PATTERN FOR PERIODIC TEST– I AND II

Time – 1 hour 30 minutes

M.M: 40

No. of Ques. Marks Total

#### SECTION A

- |   |   |   |   |      |
|---|---|---|---|------|
| • Multiple Choice Question(MCQ)/<br>Picture based question                        | 1 | x | 1 | = 01 |
| • One word/one line answer<br>type question                                       | 1 | x | 1 | = 01 |
| • Analogy type question   | 1 | x | 1 | = 01 |
| • Odd one out/rewrite the correct<br>Statement by changing the<br>underlined word | 1 | x | 1 | = 01 |
| • Assertion & Reason  | 1 | x | 1 | = 01 |

#### SECTION B

- |                                    |   |   |   |      |
|------------------------------------|---|---|---|------|
| • Very short answer type questions | 3 | x | 2 | = 06 |
|------------------------------------|---|---|---|------|

#### SECTION C

- |                               |   |   |   |     |
|-------------------------------|---|---|---|-----|
| • Short answer type questions | 3 | x | 3 | =09 |
| • Figure based question       | 1 | x | 3 | =03 |
| • Labelled diagram            | 1 | x | 3 | =03 |

#### SECTION D

- |                              |   |   |   |     |
|------------------------------|---|---|---|-----|
| • Long answer type questions | 2 | x | 5 | =10 |
|------------------------------|---|---|---|-----|

#### SECTION E

- |                              |   |   |   |     |
|------------------------------|---|---|---|-----|
| • Case/source based question | 1 | x | 4 | =04 |
|------------------------------|---|---|---|-----|

**Total = 40**

## QUESTION PAPER PATTERN FOR HALF-YEARLY AND ANNUAL EXAMS

**Time: 3 hours**

**M.M: 80**

	No. of Ques.	Marks	Total
<b>SECTION A</b>			
• Multiple choice questions (MCQ)/ Picture based question	2	x 1	=02
• One word/one line answer type questions	2	x 1	=02
• Analogy type question	2	x 1	=02
• Odd one out/rewrite the correct statement by changing the underlined word	2	x 1	=02
• Assertion & Reason	2	x 1	=02
<b>SECTION B</b>			
• Very short answer type questions	7	x 2	=14
<b>SECTION C</b>			
• Short answer type questions	8	x 3	=24
• Figure based question	1	x 3	=03
<b>SECTION D</b>			
• Long answer type questions	4	x 5	=20
• Labelled Diagram	1	x 5	=05
<b>SECTION E</b>			
• Case/source based question	1	x 4	=04
		<b>Total</b>	<b>= 80</b>

### Note:-

1. 30% weightage will be given to self made questions. Figure/Picture based questions and case/source based questions will also be self made questions.
2. Only the diagrams which are mentioned in the syllabus will be given in the exams.
3. For each term, weightage of 5 marks will be for Science Notebook.

## SUBJECT ENRICHMENT

### TERM I

Integrated Project Work (refer to Annexure-I)

**M. M: 20** marks

### TERM II

Project Work (refer to Annexure-II)

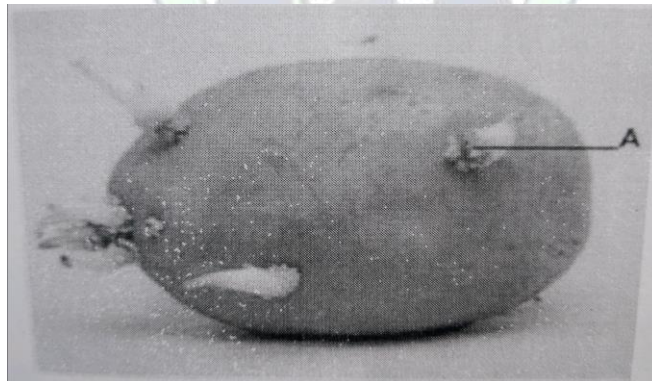
**M. M: 20** marks

#### NOTE:

1. Other details of the activities will be provided to the students in their classes.

#### SAMPLE OF FIGURE BASED QUESTION

**Q. Look at the picture carefully and answer the questions given below.**

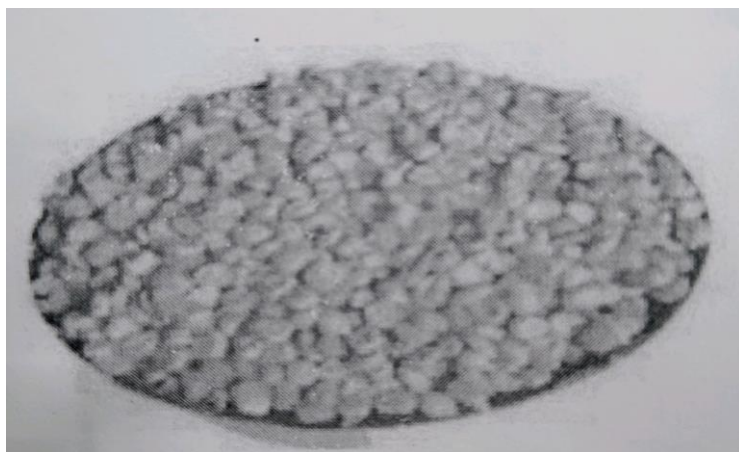


- a) Name the part of the potato represented by the letter A. (1)
- b) What is the use of Part A? (1)
- c) Which part of a plant is the potato? (1)

## SAMPLE OF CASE BASED QUESTION

**Q. The following question is case/source based question. Read it carefully to answer the questions that follow:**

Sunil made popcorn. He heated oil in a cooking pot and put in the popcorn kernels. A minute later they popped to make popcorn.



- a) What makes the popcorn kernels change? (1)
- b) Give one example of above mentioned change. (1)
- c) Is this a reversible or irreversible change? Explain. (2)

तमसां मा ज्योतिर्गमय

## **SUBJECT: SOCIAL SCIENCE**

### **Prescribed Books:**

1. Time Tales- 5 Social Studies (Indiannica Learning)
2. Active Map Practice Book (Focus Learning)

### **TERM – I**

#### **Course for Periodic Test – I**

- Chapter-1 Globes and maps
- Chapter-2 Latitudes and longitudes
- Chapter-3 Rotation and revolution of the earth
- Chapter-13 Evolution of writing
- Chapter-15 People who won the Nobel Prize

#### **Course for Half Yearly Exams**

- Chapter-4 Major landforms
- Chapter-5 Weather and climate
- Chapter-14 History of medicine
- Chapter-16 Two world wars
- Chapter-17 United Nations
- Chapter -18 Working of the United Nations
- Chapter-23 Indian Government
- + All the chapters of Periodic Test – I mentioned below**

- Chapter-1 Globes and maps
- Chapter-2 Latitudes and longitudes
- Chapter-3 Rotation and revolution of the earth
- Chapter-13 Evolution of writing
- Chapter-15 People who won the Nobel Prize

### **Map work:**

- Continents and Oceans
- Region of Torrid Zone- Amazon Basin, Democratic Republic of Congo, Malaysia and Indonesia
- Political map of India

- States and their capitals
- Neighbouring countries and their capitals

## TERM – II

### Course for Periodic Test – II

Chapter-6 Democratic Republic of the Congo  
 Chapter-7 Land of ice and snow  
 Chapter- 8 Land of hot sands  
 Chapter-9 Grasslands of the Temperate Zone  
 Chapter-19 Some famous Indians  
 Chapter- 20 Revolt of 1857

### Course for Annual Exams

Chapter-10 Natural resources  
 Chapter-11 Natural disasters  
 Chapter-12 Protecting the environment  
 Chapter-21 Early phase of the nationalist movement  
 Chapter- 22 Rise of a Mahatma  
**+ All the chapters of Periodic Test – II mentioned below**  
 Chapter-6 Democratic Republic of the Congo  
 Chapter-7 Land of ice and snow  
 Chapter- 8 Land of hot sands  
 Chapter-9 Grasslands of the Temperate Zone  
 Chapter-19 Some famous Indians  
 Chapter- 20 Revolt of 1857  
**+ Chapter-23 Indian Government (Chapter of Term-I)**  
**+ Chapter-17 United Nations (Chapter of Term-I)**

### Map work:

- Deserts of the World (Mojave, Atacama, Sahara, Namib, Kalahari, Thar, Gobi)
- Greenland
- Temperate Grasslands of the World (Prairies, Steppes, Pampas, Downs & Veld)

- Centres of Freedom Struggle
- Political map of India
  - Union territory and their capitals

### QUESTION PAPER PATTERN FOR PERIODIC TEST-I AND PERIODIC TEST-II

**Time – 1 hours 30 minutes**

**M.M: 40**

**No. of questions × Marks**

<b>1. Section A (Multiple Choice Based Questions)</b>	<b>5 × 1 = 05</b>
Q1 to Q5 are of 1 mark each	
i) Identify the image	1 × 1 = 1
ii) Statement Based	1 × 1 = 1
iii) Match the column	1 × 1 = 1
iv) Complete the following statement using the appropriate word	1 × 1 = 1
v) State whether the following statement is True or False	1 × 1 = 1
<b>2. Section B (Very short Questions)</b>	
Q6 to Q11 are of 2 marks each (Answer upto 20 Words)	6 × 2 = 12
<b>3. Section C (Short Questions)</b>	
Q12 to Q14 are of 3 marks each (Answer upto 30 Words)	3 × 3 = 09
<b>4. Section D (Long answer/ Answer in detail)</b>	
Q15 & Q16 are of 5 marks each (Answer upto 60 Words)	2 × 5 = 10
<b>5. Section E (Case Based Questions)</b>	
Q17 is of 4 marks with three sub parts of 1,1,2 marks	1 × 4 = 04

**Total = 40**

## QUESTION PAPER PATTERN FOR HALF YEARLY EXAMS AND ANNUAL EXAMS

Time – 3 hours

M.M: 80

No. of questions × Marks

<b>1. Section A (Multiple Choice Questions)</b>	10 × 1 = 10
Q1 to Q10 are of 1 mark each	
i) Identify the image	2 × 1 = 2
ii) Statement Based	2 × 1 = 2
iii) Match the column	2 × 1 = 2
iv) Complete the following statement using the appropriate word	2 × 1 = 2
v) State whether the following statement is True or False	2 × 1 = 2
<b>2. Section B (Very Short Questions)</b>	
Q11 to Q17 are of 2 marks each (Answer upto 20 Words)	7 × 2 = 14
<b>3. Section C (Short Questions)</b>	
Q18 to 23 are of 3 marks each (Answer upto 30 Words)	6 × 3 = 18
<b>4. Section D (Long answer/ Answer in detail)</b>	
Q24 to Q28 are of 5 marks each (Answer upto 60 Words)	5 × 5 = 25
<b>5. Section E (Case Based Questions)</b>	
Q29 & Q30 are of 4 marks each with three sub parts of 1,1,2 marks	2 × 4 = 08
<b>6. Section F (Map Based Question)</b>	
Q31 contains 5 questions of 1 mark each	5 × 1 = 05
	<b>Total = 80</b>

### NOTE:

1. 30% weightage will be given to self-made questions.
2. For maps -- Refer to Map Practice book.



## SUBJECT ENRICHMENT

### Term – I

- Integrated Project Work (refer to Annexure-1) (20 Marks)

### Term – II

- Project work (refer to Annexure-2) (20 Marks)

### Sample: Case Study

(4 marks)

A map is a drawing of whole of the earth or a part of it on a flat surface. Maps display a great variety of geographical information, like physical features, climate, population, and forests. Maps can also show human-made features, such as industries, roads, railways, air routes, dams, villages, towns, and cities.

1. Who is a Cartographer? 1
2. What is an Atlas? 1
3. Differentiate between physical map and political map. 2

## **SUBJECT: COMPUTER**

Prescribed Book: BitWorld Advanced (5)

By: Ravi K. Chugh (FUTUREINK PUBLICATIONS)

### **TERM – 1**

#### **Course for Periodic Test – 1**

Chapter-1: Evolution of Computer

Chapter-2: Software

Chapter-6: Moving Ahead with PowerPoint 2016

#### **Course for Half Yearly Exams**

Chapter-4: Formatting Features in Word 2016

Chapter-5: Graphics & Tables in Word 2016

**+ All the chapters of PT – 1 mentioned below**

Chapter-1: Evolution of Computer

Chapter-2: Software

Chapter-6: Moving Ahead with PowerPoint 2016

### **TERM – 2**

#### **Course for Periodic Test – 2**

Chapter-7: Scratch Coding

Chapter-8: Conditional Coding with Scratch

Chapter-9: Introduction to Artificial Intelligence (AI)

#### **Course for Annual Exams**

Chapter-3: Windows 10 File Management System

**+ All the chapters of PT – 2 mentioned below**

Chapter-7: Scratch Coding

Chapter-8: Conditional Coding with Scratch

Chapter-9: Introduction to Artificial Intelligence (AI)

Chapter-2: Software **(from Term – 1)**

## QUESTION PAPER PATTERN

Time: 1:30 hrs

M.M. – 40

### Section A: Objective Type Questions

12 × 1 = 12 marks

This section consists of 12 questions of 1 mark each.

Questions can be asked in the following formats: -

<b>Section A: Objective Type Questions</b>	<b>No. of questions</b>	<b>Marks</b>
• Multiple Choice Questions	5	5
• One word	7	7
• Fill in the blanks		
• Match the columns		
• Full forms (if any)		
• True/ False		
• Picture Based Question		

### Section B: Short Answer Type Questions

08 × 2 = 16 marks

This section consists of 8 questions of 2 marks each.

### Section C: Long Answer Type Questions

04 × 3 = 12 marks

This section consists of 4 questions of 3 marks each.

### Practical

20 marks

Practical of 20 marks each will be conducted in both the terms separately which will include-

Practical Exam.	Notebook	Viva
10	05	05

### NOTE:

1. 30% weightage will be given to self-made questions.
2. Lab Learning given in the book will be taken up during the lab session.

## **SUBJECT – G.K. & REASONING APTITUDE**

**Part A – (General Knowledge)**

**M.M.**

**25 Prescribed Book : TRAIN YOUR BRAIN (5)**

**Publisher : acevision Publisher Pvt. Ltd.**

### **Term – I Course for Periodic Test – I**

#### **Nature's Nest**

**Page No.**

- Plant trap
- Mammals
- Reptile zone
- Fishing spot
- Deadliest animals

7

8

9

10-11

12

#### **Quiz-quest 1**

**13**

#### **India Infinite**

**Page No.**

- On the hills
- Indian heritage -1
- Spectacular India
- Union Territories

15

16-17

18-19

20

#### **Quiz-quest 2**

**21**

#### **+ Current Affairs**

Current affairs will be provided to the students in the class. These will be done in the G.K notebook.

### **Course for Half Yearly Examination**

#### **Super Science**

**Page No.**

- Specialists
- Stepping into space
- Great Indian brains

23

24-25

26

• Science vocabulary	27
• On the net	28
<b>Quiz-quest 3</b>	<b>29</b>
<b>Book Worm</b>	<b>Page No.</b>
• Iconic characters	31
• Before and after	32
• Indian authors	33
• Perfect Proverbs	34
• Anagrams	35
<b>Quiz-quest 4</b>	<b>36</b>
<b>Wonder World</b>	<b>Page No.</b>
• Sacred spots	40
• World rivers	41
• New Seven Wonders	42-43
• Port cities	44
<b>+ All Chapters of PT – I mentioned below</b>	
<b>Nature's Nest</b>	<b>Page No.</b>
• Plant trap	07
• Mammals	08
• Reptile zone	09
• Fishing spot	10-11
• Deadliest animals	12
<b>Quiz-quest 1</b>	<b>13</b>
<b>India Infinite</b>	<b>Page No.</b>
• On the hills	15
• Indian heritage -1	16-17
• Spectacular India	18-19
• Union Territories	20
<b>Quiz-quest 2</b>	<b>21</b>



## + Current Affairs

Current affairs will be provided to the students in the class. These will be done in the G.K notebook.

### Term – II Course for Periodic Test – II

	Page No.
<b>Wonder World</b>	
• All for peace	45
• Take off	46
<b>Quiz-quest 5</b>	<b>47</b>
<b>Sport Light</b>	<b>Page No.</b>
• Martial arts	49
• Tennis trivia	50
• Sports biographies	51
• Commonwealth Games	52-53
• All round sports	54
<b>Quiz-quest 6</b>	<b>55</b>
<b>Everyday skills</b>	<b>Page No.</b>
• Social skills	57
• The R's rules	58
• Strength status	59
• Eating out	60
• First-aid and safety	61
<b>Quiz-quest 7</b>	<b>62</b>

## + Current Affairs

Current affairs will be provided to the students in the class. These will be done in the G.K notebook.

## Course for Annual Examination

	Page No.
<b>Mixed Bag</b>	
• Indian art forms	63
• Changemakers	64-65
• Business tycoons	66
• Who said it?	67
• Branches of study	68
• Indian logos	69
<b>Quiz-quest 8</b>	<b>70</b>
• Model Test Paper - I	<b>76-77</b>
• Model Test Paper – II	<b>78-79</b>
• News Recap	<b>80</b>
<b>+ All chapters of PT-II mentioned below</b>	
<b>Wonder World</b>	<b>Page No.</b>
• All for peace	45
• Take off	46
<b>Quiz-quest 5</b>	<b>47</b>
<b>Sport Light</b>	<b>Page No.</b>
• Martial arts	49
• Tennis trivia	50
• Sports biographies	51
• Commonwealth Games	52-53
• All round sports	54
<b>Quiz-quest 6</b>	<b>55</b>
<b>Everyday skills</b>	<b>Page No.</b>
• Social skills	57
• The R's rules	58
• Strength status	59
• Eating out	60
• First-aid and safety	61
<b>Quiz-quest 7</b>	<b>62</b>

## + Current Affairs

Current affairs will be provided to the students in the class. These will be done in the G.K notebook.

### **NOTE:-**

# Tell Me More – Who?, What?, Where?, When?, Why?, How? given in book is only for additional information and will not be asked in the exams

# Fun Spot – Green Home Journey (page no. 38-39) and Think Tank (page no. 71- 75) are only for practice and will not be asked in the exams.





## **PART B - REASONING APTITUDE**

**Prescribed Book** : LOGIC and BEYOND – 5  
**Author** : Dr. C. B. Mishra  
**Published by** : Learning Hill

### **Term-I**

**Course for Periodic test – I**

**15 marks**

#### **Part-A: Verbal Aptitude**

Chapter 2. Analogy

Chapter 3. Classification

#### **Part-B: Non Verbal Aptitude**

Chapter 6. Analogy

Chapter 7. Patterns

#### **Part-C: Quantitative Aptitude**

Chapter 13. Numbers

Chapter 14. Simple Mathematical Operations

**Course For Half –Yearly Examination**

**15 marks**

#### **Part-A: Verbal Aptitude**

Chapter 1. Alphabet Test

#### **Part-B: Non Verbal Aptitude**

Chapter 8. Classification

Chapter 9. Embedded Figures

#### **Part-C: Quantitative Aptitude**

Chapter 15. Series

Chapter 19. Fractions

**+ All the chapters of PT- I mentioned below**

#### **Part-A: Verbal Aptitude**

Chapter 2. Analogy

Chapter 3. Classification

#### **Part-B: Non Verbal Aptitude**

Chapter 6. Analogy

Chapter 7. Patterns

**Part-C: Quantitative Aptitude**

Chapter 13. Numbers

Chapter 14. Simple Mathematical Operations

**Term – II**

**Course for Periodic Test– II**

**15 marks**

**Part-A: Verbal Aptitude**

Chapter 4. Coding-Decoding

Chapter 5. Ranking

**Part-B: Non-Verbal Aptitude**

Chapter 11. Mirror Images

Chapter 12. Water Images

**Part-C: Quantitative Aptitude**

Chapter 16. Puzzle Test

Chapter 17. Age

**Course for Annual Examination**

**15 marks**

**Part-A: Verbal Aptitude**

Chapter 1. Alphabet Test **(From Term 1)**

**Part-B: Non-Verbal Aptitude**

Chapter 7. Patterns **(From Term 1)**

Chapter 10. Completing Figures

**Part-C: Quantitative Aptitude**

Chapter 14. Simple Mathematical Operations **(From Term 1)**

Chapter 18. Direction Sense

Chapter 20. Geometry

**+ All the chapters of PT- II mentioned below**

**Part-A: Verbal Aptitude**

Chapter 4. Coding-Decoding

Chapter 5. Ranking

**Part-B: Non-Verbal Aptitude**

Chapter 11. Mirror Images

Chapter 12. Water Images

## Part-C: Quantitative Aptitude

Chapter 16. Puzzle Test

Chapter 17. Age

### Paper Pattern and Marking Scheme For Periodic Test-I/Periodic Test -II/ Half Yearly Examination/Annual Examination (2025-2026)

#### Part A – General Knowledge

**M.M=25**

- 20 Questions of 1 mark each 20 x 1=20
- 10 Questions of 0.5 mark each 10 x 0.5=5

**Total Marks = 25 [No. of Questions = 30]**

#### NOTE:

- The above question paper will consist of only Multiple-Choice Questions, even in the mentioned rubrics, options will be given.
- Questions can be asked in the following ways.
- One word
- Fill in the blanks
- Match the pairs
- True/False
- Abbreviations
- Name the terms etc.

#### Part B – REASONING APTITUDE

**M.M. = 15**

- 10 Questions of 1 mark each (10×1=10)
- 10 Questions of 0.5 mark each (10 x 0.5= 05)

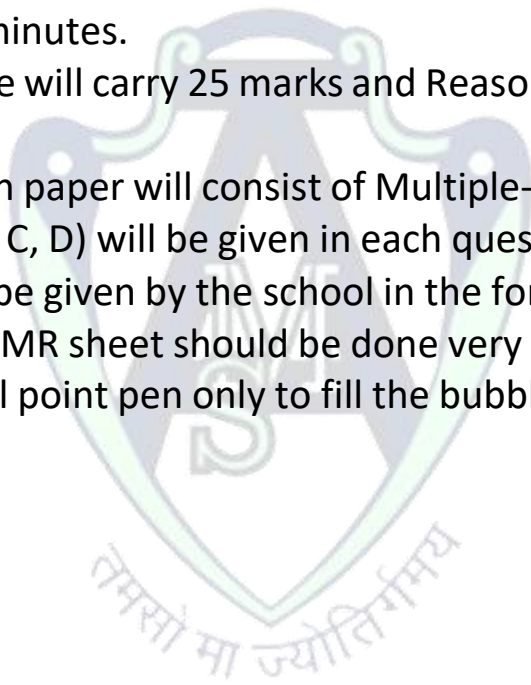
**Total Marks = 15 [No. of Questions = 20]**

**NOTE:**

- The entire paper of Reasoning Aptitude will be self made, keeping the concept same.
- Sample paper 1 and 2 are for self-practice.
- Safal-Mock Test Papers are not included in the syllabus.

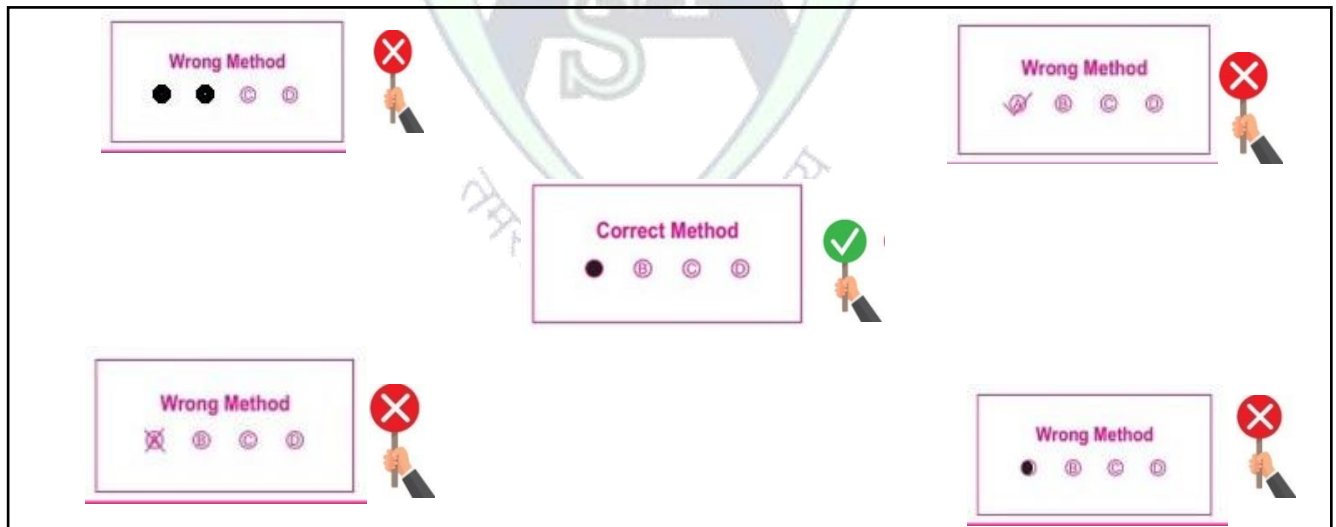
**General Instructions :-**

1. There will be a combined question paper for General Knowledge and Reasoning Aptitude.
2. The maximum marks for the combined paper will be 40 and time duration will be 1 hour 30 minutes.
3. General Knowledge will carry 25 marks and Reasoning Aptitude will carry 15 marks.
4. The entire question paper will consist of Multiple-Choice Questions only.
5. Four options (A, B, C, D) will be given in each question.
6. Answer sheet will be given by the school in the form of OMR sheet.
7. All the entries of OMR sheet should be done very carefully.
8. Use Black/Blue Ball point pen only to fill the bubbles in OMR sheet.



## IMPORTANT INSTRUCTIONS FOR FILLING OMR SHEET

1. Fill all the entries very carefully.
2. For class III, use dark lead pencil only to fill the bubbles.
3. For classes IV to VIII, use Black/Blue ball point pen only. Any type of cutting/ overwriting/ use of white fluid and pencil/ other pen is strictly prohibited. Non-compliance may lead to declare the OMR Sheet invalid.
4. Bubbles should be filled completely. Multiple fillings are invalid.
5. There is only one correct answer for each question.
6. Mark your answer only in appropriate bubble against the number corresponding to the question.
7. For example: To mark the response of question 7, student has to darken the correct bubble in front of serial number 7 in OMR sheet.
8. Do not fold/ mutilate or make any stray marks on OMR Sheet.
9. Do not do any rough work on the OMR sheets. Use the rough sheets provided by the school.
10. Some samples of wrong/ correct ways are shown below :.



**OMR SHEETS WILL BE SCANNED AND EVALUATED THROUGH A SOFTWARE. HENCE ANY DEVIATION FROM THE INSTRUCTIONS MENTIONED ABOVE WILL LEAD TO NON-EVALUATION OF THE OMR SHEET AUTOMATICALLY.**

## **SUBJECT: ART**

**Prescribed Book: Handiworks My Art and Craft Book - 5  
(Bharati Bhawan Publications)**

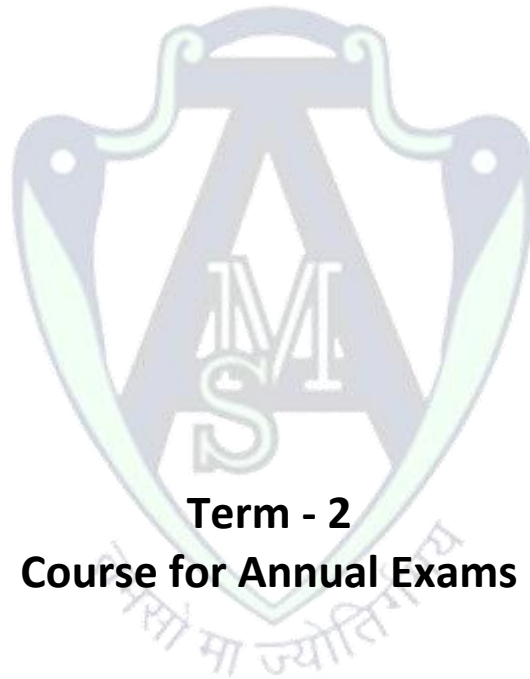
### **Term - 1 Course for Half Yearly Exams**

#### **Colouring Work**

1. Design in Triangle
2. Pair of Birds
3. Penguins
4. Park Scene

#### **Shading Work**

5. Sea Waves
6. Any Animal
7. India Gate
8. Lamp



### **Term - 2 Course for Annual Exams**

#### **Colouring Work**

1. Design in Circle
2. Fruits Plate
3. Cloudscape
4. Rose Flower

#### **Shading Work**

1. Earthen Pot
2. Vegetable Basket
3. Jug and Glass
4. Tea Pot

## QUESTION PAPER PATTERN FOR HALF YEARLY AND ANNUAL EXAMS

Time: 3 hrs.

M.M: 40

### Instructions:

Attempt one question from colouring and one from shading.

Q.1 Draw any one topic and colour it. (1 out of 2) 25 Marks

Q.2 Draw any one topic and shade it. (1 out of 2) 15Marks

### NOTE:

1. Drawing file will have a weightage of 10 marks in each term.
3. Internal choice will be given between the topics of each colouring and shading work.
4. Syllabus of Half Yearly Exams will not be included in Annual Exams.

### Activity Book

	Term – 1	
	ART & CRAFT	Page no
1.	Tints, Tones and Shades (Mixing colours)	3
2.	Painted Leaves (Colouring)	4
3.	Illusion (Drawing, colouring)	5
4	Fish Silhouettes (Flat-brush painting)	6
5	Ostrich (Shading)	8
6.	Colourful Parrots (Shading)	9
7.	Reflection (Shading)	10
8.	Spider's Web (Drawing, painting)	12
9.	Sea Waves (Drawing, colouring)	14
10.	Portraits: Man (Drawing, colouring)	16
11.	Portraits: Woman (Drawing, colouring)	17
12.	Penguins (Drawing, colouring)	18
13.	Drawing Humans (Drawing, colouring)	20
14.	Body Posture (Drawing, colouring)	22
15.	Giraffe (Drawing, colouring)	23
16.	Symmetry (Drawing, colouring)	24

<b>17.</b>	India Gate (Drawing, colouring)	<b>25</b>
<b>18.</b>	Lines and Strokes (Drawing)	<b>26</b>
<b>19.</b>	Playground (Drawing, colouring)	<b>28</b>
<b>20.</b>	Sunny Day (Colouring)	<b>30</b>
<b>21.</b>	Grassland (Colouring)	<b>31</b>
<b>22.</b>	Bright Lamp (Drawing, shading)	<b>32</b>

<b>Term – 2</b>		
	<b>ART &amp; CRAFT</b>	<b>Page no.</b>
<b>23.</b>	Earthen Pot (Drawing, shading)	<b>33</b>
<b>24.</b>	Red Fort (Drawing, colouring)	<b>34</b>
<b>25.</b>	Perspective: Near and Far (Drawing, colouring)	<b>36</b>
<b>26.</b>	Fruits (Drawing, colouring)	<b>38</b>
<b>27.</b>	Vegetable Basket (Drawing, colouring)	<b>39</b>
<b>28.</b>	Singing Birds (Paper craft)	<b>40</b>
<b>29.</b>	Cloudscape (Stencil drawing)	<b>42</b>
<b>30.</b>	Quilling (Craft)	<b>44</b>
<b>31.</b>	Caterpillar (Craft)	<b>45</b>
<b>32.</b>	Octopus (Craft)	<b>46</b>
<b>33.</b>	Rainbow (Clay activity)	<b>47</b>
<b>34.</b>	Clay Rose (Clay activity)	<b>48</b>
<b>35.</b>	Pencil Holder (Craft)	<b>49</b>
<b>36.</b>	Pyramid (Craft)	<b>50</b>
<b>37.</b>	Koala Bear (Origami)	<b>51</b>
<b>38.</b>	Paper Box (Craft)	<b>52</b>
<b>39.</b>	Red Roses (Colouring)	<b>53</b>
<b>40.</b>	Still Life: Jug and Glass (Pencil shading)	<b>54</b>
<b>41.</b>	Still Life: Teapot (Pencil shading)	<b>55</b>
<b>42.</b>	3D Art (Craft)	<b>56</b>



**SUBJECT: HEALTH AND PHYSICAL EDUCATION – 5**

**PRESCRIBED BOOK:**

**A Better You - Part B: HEALTH AND PHYSICAL EDUCATION - 5 (Provided by the school, available on school website [www.ashamodernschool.in](http://www.ashamodernschool.in))**

**TERM-I**

<b>UNIT-1</b>	<b>HUMAN BODY</b>
<b>UNIT-2</b>	<b>FITNESS AND ITS COMPONENTS</b>

**TERM-II**

<b>UNIT-3</b>	<b>YOGA &amp; ITS BENEFITS</b>
<b>UNIT-4</b>	<b>SPORTS SKILLS EXERCISES</b>

**PAPER PATTERN FOR HALF YEARLY/ANNUAL EXAMINATIONS**

**MM: 10**

- 1. Practical: 5 marks**
- 2. Viva: 5 marks**

**Note: Marks will be converted into Grades in the Report Card.**

# ANNEXURE – I

## SUBJECT ENRICHMENT – TERM I

(SUMMER VACATION HOMEWORK: 2025-2026)

### INDEX

1. MATHEMATICS
2. SCIENCE
3. SOCIAL SCIENCE

#### 1- MATHEMATICS

To find the LCM of 6 and 16 by using grid  $10 \times 10$ .

**20 marks**

#### 2- SCIENCE

**Topic: Agriculture**

**M.M: 20 marks**

The practice of growing crops and rearing animals on a large scale to provide food, fibre and other product is called agriculture.

- List the steps of agriculture. Paste their pictures also on A4 sheets.
- Explain kharif crops and rabi crops with examples.
- Name the type of soil needed to grow rice and cotton plants. Why is this soil selected?

### 3. SOCIAL SCIENCE

MM-20

#### Topic- Weather and Climate in different climatic zones

Select one country from each climatic zone - torrid zone, frigid zone and temperate zone. Write about its location, wildlife, vegetation and lifestyle of people of these countries with pictures.



# Annexure-II

## SUBJECT ENRICHMENT – TERM II

(WINTER VACATION HOMEWORK: 2025-2026)

### INDEX

1. MATHEMATICS
2. SCIENCE
3. SOCIAL SCIENCE

#### 1- MATHEMATICS

**MM: 20**

Represent the marks of your Half – Yearly Examination of any five subjects in the form of Pictograph.

#### 2- SCIENCE

##### Activity- 1

**M.M: 10 marks**

Make a poster on Global warming. Give a catchy slogan to it.

##### Activity-2

**M.M: 10 marks**

Paste pictures and write a note on any 2 out of the 4 Scientists using A4 sheets.

1. Neil Armstrong
2. Isaac Newton
3. Charles Francis Richter
4. Dr. A P J Abdul Kalam

### 3. SOCIAL SCIENCE

1. Paste the pictures of five radical and five moderate leaders each along with their names.
2. Describe the timeline of events that took place in Mahatma Gandhi's life until India won independence.

#### IMPORTANT NOTE:

- 1) Students can take help from internet
- 2) The project work should be in detail by putting the headings as mentioned above.
- 3) The project work has to be completed in 3-4 pages on A-4 size sheets.

